

# St. Albert of Jerusalem School September 2009 Newsletter

7185 Rosehurst Drive, Mississauga ON L5N 7G6  
Phone (905)785-9298 Fax (905)785-1227  
Board web site: [www.dpcdsb.org](http://www.dpcdsb.org)  
School website: [www.dpcdsb.org/alber](http://www.dpcdsb.org/alber)

**Principal:**

S. Steer

**Vice Principals:**

P. Golin  
D. Carpe

**Secretaries:**

T. Ball  
A. Charette

**Superintendent:**

D. Oude-Reimerink

**Trustee:**

E. O'Toole  
(905)812-5163

**Parish:**

St. John of the Cross

**Pastoral Team**

Fr. Leo Huard  
Fr. Abraham Kulanjiyil  
Fr. Joseph Kalluvila

**JANUARY'S Virtue ~Self-control**

God has given us the ability to choose.

We are able to control how we react to what happens around us.

We may feel pressure from inside or from outside ourselves to react violently to a situation. We've all "lost it" at one time or another. We are never proud of those moments. As soon as they happen we make a promise that they will not happen again.

Through prayer and concentration, we can get better at controlling our reactions. We can get better at showing *self-control*.

Self-control helps us to resist the temptation to do something that we will regret.

Self-control helps us to resist the temptation to do something that will harm ourselves or others.

Self-control is one of the marks of a spiritually mature person.

When we all use self-control, we can be sure that our school will be a safe, caring and inclusive place to live and to learn.

**A person with *self-control*...**

- Is patient
- Knows how to wait his/her turn
- Can calm him/herself down and think before reacting to situations
- Knows how to avoid physical aggression (hitting, kicking, pushing, fighting, etc.)
- Can think things through and do what is best for everyone

## STUDENT INFORMATION

It is most important that we have up-to-date records of your address, phone numbers, and emergency contacts in the event that the school must contact you regarding your child. If there have been any changes, please ensure that we have this information.



## EMERGENCY SCHOOL PROCEDURES

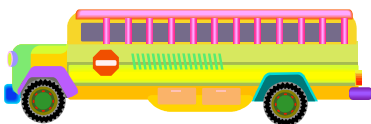
There may be days during the upcoming winter months when inclement weather presents a potential safety hazard to our students. It is essential that parents and children discuss the procedures that they wish to follow for safe arrival at home.

### **For students that do not take the bus please determine:**

- the best way to walk home;
- with whom the child should walk;
- where the child should go if there is no one at home;
- how the child should seek help if wind and snow are so strong that they cannot see the way home.

### **For students who do take the bus:**

It is a fact that bad weather may cause delays for student pick up at bus stops. Please ensure that your child has a safe place to go if the bus is late or does not arrive. If you notice that a student is stranded at a bus stop, please attempt to contact the child's parent. It is not recommended that parents volunteer to drive another child to school without the permission of the child's parent. If you decide to transport your child to school because buses have been cancelled, please ensure that you have made arrangements for their return home at the end of the school day.



## LATE BUSES

As the weather worsens please take into consideration that buses may be delayed in reaching their stops. We don't wish to see students stranded out in the elements so, on inclement days, please:

- Listen to the radio for bus cancellations.
- If possible, arrange for car pooling.
- For late pick-up call Student Transportation 905-890-6362.

Wait no more than 15 minutes for a late bus. Contact the school or the above listed numbers if your bus has not arrived and wait for information regarding arrival.

## SNOW AND ICE

Snow is part of our winter life in Canada, providing both frustration and enjoyment. We all like to play in it. Throwing snowballs and sliding on ice is fun. However, snow and ice can be very dangerous. Most injuries happen during wintertime. For safety reasons, our school rule must be that snow stays on the ground – no snowballs, kicking snow or any other activity with snow or ice that could be harmful, which includes sliding on slopes. Although the school hill offers lots of fun for sledding, it is very difficult to ensure student safety when numerous students are sliding at the same time. Thank you for taking the time to reinforce these safety rules with your children.



## SCHOOL LOCKDOWN DRILL

It is a policy of the Dufferin-Peel CDSB that all schools conduct a practice of "Lockdown Procedures" at least twice a year. This procedure will be initiated should an emergency exist on school property or in the surrounding neighbourhood.

Listed are the procedures that our students have been trained to follow. Teachers regularly practice this precautionary drill with their classes and the school has held two formal practices this winter.

Upon hearing the announcement "Initiate Lockdown Procedures":

- The lockdown bell sequence will be repeatedly rung.
- All students and staff inside the building will remain in their classrooms.
- Students in the hallways or washrooms will go to the closest classroom.
- Students in classrooms will remain in their classroom, in a corner of the room which is out of the sightline of all windows and doors.
- All students and staff who are outside the building are to move quickly to our evacuation site of St. Therese of the Child Jesus School and remain there until further direction.
- The announcement "Lockdown Procedures complete" will indicate the completion of the drill.

## INDOOR SHOES

Please ensure that your children have a pair of shoes to put on at school during the winter season. If the fire alarm sounds and/or we need to leave the building as soon as possible, there may not be time for students to put on their boots.



## LOST AND FOUND

We often find lost items at St. Albert of Jerusalem School. Items such as shoes, hats, jackets, gloves, etc. are collected and placed in the lost and found box.

Please have a look to see if any items belong to your child. At the end of the school year, all remaining items will be donated to charity.



## VALUABLES AT SCHOOL

*Please remember that Board policy prohibits the use of personal electronic devices at school, especially cell phones.* During the school day, these devices must be turned off and kept in a secure location such as a backpack. Staff cannot be responsible for any valuables that your child brings to school. Although we do our best to ensure that personal items are kept safe, we cannot always monitor money, jewelry, electronics, toys, etc. It is best if these items are kept at home. We also caution that MP3 players and Ipods are lucrative items that are easily stolen on the way to and from school. Please don't put your children at risk by allowing these items to come to school.



## USE OF SCHOOL PHONES

Our office is limited in the amount of incoming and outgoing calls it can accommodate. Telephone lines need to be available for emergencies, daily school business and parent calls. Students will only be permitted to use the school phone in cases of emergency. An emergency is considered to be an illness or injury.

## OUTDOOR RECESS



Our students need to bring the necessary clothing and shoes/boots with them in order to ensure that they are dressed appropriately to meet the challenges of the winter season. Our school policy is that recess is a part of the school day. If a student is too ill to participate in all components of the school day, including recess, please do not send him/her to school. If there are specific medical reasons which should exclude a child from going outside, please submit a doctor's note to the office. This note should indicate the reason and the time period for the modified recesses. We have guidelines from the Health Department which help us make a decision as to whether it is too cold for students to go outdoors:  $-22^{\circ}\text{C}$  is a modified day;  $-25^{\circ}\text{C}$  students stay in all day. During modified school days students will be outdoors for am and pm recesses and no longer than 20 minutes at lunch recess.

## FLEXIBLE BOUNDARY POLICY

Currently St. Albert of Jerusalem houses 888 students. At this population we are comfortable within the building, but do not have an excess of space or resources. Many students attend our school under the "Flexible Boundary Policy". This offers convenience for many parents as they access daycare in the area. Parents who have requested flexible boundary admittance for their children must be aware that the policy will be considered on a student-by-student basis, taking into consideration the class size of the students who are enrolling. Although we offer as much support as possible to all our students, please understand that the availability of the flexible boundary policy should not negatively impact on the school resources. As always, please call the school if you have any questions concerning this policy.



## VISITOR AND PARENT SIGN IN... A MUST

It is important for the safety of all students in the school that parents wear a visitor's sticker. Please always sign in at the office and obtain your visitor's sticker. It takes only a minute to help keep your children safe. Students and staff feel safer when a visitor's sticker is visible on unfamiliar faces as well as familiar ones.

Thank you so very much to those parents who always take the time to sign in. Your cooperation is appreciated.

## STUDENT PUNCTUALITY

Punctuality is a necessary life skill that if practiced now, will be beneficial in the future. Arriving early or promptly for your day at work enables you to compose yourself and ease gently into your environment. Children who arrive late are often out-of-sorts and rushed into beginning their day. Their time to socialize and greet their peers is lost in their hurried entry into the classroom. It is the school expectation that instruction begin at 8:30 a.m. and 12:30 p.m. Late arrival disturbs the class and interrupts lessons. Late arrival is not healthy for your child. It places them in a rushed frame of mind, making them feel like they have to catch up. Even a few late minutes makes a difference. For those parents that ensure early arrival for their children, thank you. For those who are regularly late, please make every effort to arrive between 8:45 and 8:55 a.m., and prior to 12:55 p.m. If by chance students are late, we ask that they obtain a late slip from the office. This late slip is not meant as a punishment. It is an important link in our safe entry process. When a child is alerted to the office as absent, the secretary cross-references to students who have entered late before making calls home to confirm a child reported as absent.

If you feel there is a discrepancy between our bell and your time, please visit [www.timeanddate.com](http://www.timeanddate.com) and synchronize.



### Late Intermediate Students:

Intermediate students who are continually late, cause additional concern. Secondary schools begin classes at 8:05 a.m. This means that students who are in the habit of arriving between 8:35 – 9:00 a.m. will be at risk of missing and perhaps failing their first period class. The skill of punctuality must be instilled early. Children do not necessarily understand or respect the consequences of tardiness. Please help us help them.

## TRANSPORTATION

A decision to cancel school transportation and/or close schools, due to inclement weather, is usually made by 6:30 AM. Only the Director of Education has the authority to cancel transportation and/or close schools. Announcements are posted on the Dufferin-Peel website at <http://www.dpedsb.org> and are made on the following radio stations:



CKFM – 99.9 FM	CFNY – 102.1 FM
CHIN – 100.7 FM, 1540 AM	CFRB – 1010 AM
CHUM – 1050 AM	DC103FM
CJCL – 590 AM	CHAY – 93 FM
CFTR - 680 AM	Q107 – 107.1 FM
CHFI – 98.1 FM	CJMR – 1250 AM
JACKFM – 92.5 FM	TALK640 – 640 AM
CBC – 740 AM	CHEZ ZP7.3
CIAO – 530 AM	CJBC (Fr.) 86

### DRIVE THROUGH LANES AND KINDERGARTEN SAFETY BEFORE CONVENIENCE

Please be aware that all of the lanes at the front of the school are no-parking areas. The center lane, entrance and exit lanes and bus lanes must allow access to school buses and emergency vehicles and need to be respected as no parking areas. **Do not use these lanes for stopping or parking.** Drivers who leave their vehicles unattended in these lanes seriously jeopardize public safety, not only by blocking the fire route, but also by creating a traffic backup onto the street.

Parents wishing to park may do so either east or west of the school on Rosehurst Drive or one the streets nearest the school. The parking lot next to the school building is designated as **staff and visitor parking only.**

Parents picking up children should **never** leave vehicles unattended in the lanes in front of the school. Please assist us in maintaining safe access for buses and safety vehicles by **never** parking your vehicle in these lanes.

We would also like to remind parents that schoolyard supervision does not begin until 8:15 a.m. **Students should not be arriving before this time, as the playground is not supervised.**



### PA-RUM-PA-PA-PUM

Our annual Christmas Concert was an overwhelming success for our children and a delight to everyone fortunate enough to witness it. The young talents and voices of our primary students raised the roof on December 11<sup>th</sup>.



We thank each and every child, our primary division staff and especially Ms. Santi for bringing such wonder and joy to the Christmas season.

### DANCING WITH THE STARS

The intermediate students have completed a successful program of Ballroom Dancing. Winning the school wide competition was the red team who showed proficiency in the Tango, Merengue, Salsa and Quick Step. The talent and enthusiasm of all our students was felt throughout the fall term as our aspiring dancers practiced in the halls, the schoolyard and at home. Special thanks to Mrs. Gal and Burlington Future Steps for leading this successful program.

### COMMUNITY OFFICER

We welcome Constable Whittington into our school and classrooms. He will be working with our JK to grade 8 classes to discuss the issues of bullying and community partners. Constable Whittington is always very positive, informative and interesting. We are lucky to benefit from his unique talent and commitment to community service.

### INTERNATIONAL LANGUAGES

Elementary international language Saturday classes are available to students in grades JK to 8. No prior language experience is necessary. International Language programs comply with the Ministry of Education curriculum. Please contact the Adult and Continuing Education Office at 905- 891-9263 for information

### JUNIOR VOLLEYBALL TEAMS

The junior girls' and boys' volleyball teams have completed a great season. St. Albert takes great pride in announcing that both teams progressed to the family finals and the boys finished their season as semi-finalists at the board level tournament. A phenomenal team spirit, sense of fair play and true enjoyment of the sport placed them in the top of their divisional rankings.



Not only do we thank each team member for their dedication to practice and play, but we also would like to extend our sincerest thanks to the coaches

J. Peloso, B. Fazzari, P. Frackowiac and L. Muszinski. who have supported this extra-curricular activity We appreciate the extra time they have shared in working with these terrific students.

The members of the junior volleyball team are:

#### Boys

Joshua A.  
Avery C.  
Jacob D.  
Spencer G.  
Austin H.  
Domenic L.  
Cristian L.  
Federico L.  
Anthony O.

#### Girls

Rebecca B.  
Enana B.  
Calandra L.  
Kaitlyn L.  
Tu N.  
Vanessa P.  
Shanon R.  
Monika R.  
Taylor V.H.

### ANGER MANAGEMENT *Why do kids get angry?*

Anger is a completely normal human feeling - even for young people. Kids experience the same range of feelings as adults, including anger. All of these emotions are healthy if they are managed in a positive way.

#### *What happens when anger is not managed well?*

When anger is not managed well it can build up inside a person. This can lead to health problems such as depression or may result in angry outbursts. Parents may see their children having problems with school work, relationships, self-esteem and coping skills.

#### *Tips for Parents*

- Teach your child to recognize all feelings including anger and encourage your child to label their angry feelings.
- Model a good example; express your anger in a direct, non aggressive way.
- Encourage your child to talk about their feelings to you or anyone they trust
- Talk with your child about why they feel angry; sometimes the reasons may not be obvious.
- Encourage regular physical activity to help reduce stress. Stressed children cannot cope with their anger positively.
- Help your child to see the humour in situations; it's better to laugh at situations than to act out in anger.
  - If your child's anger problems are serious, consult your family doctor or call Region of Peel – Public Health at 905-799-7700 or visit [peelregion.ca/health](http://peelregion.ca/health)



**REFLECTING ON THE DIVERSITY OF OUR SCHOOL**

We are all individuals, yet at the same time, we are a part of many groups. We are part of a family. We are part of our school and we are part of our country. Canada is made up of individuals who are part of many groups. We respect each other's differences. Perhaps as a family, you could discuss these questions: Why did people come to Canada? What were their dreams as they sought acceptance to the nation of Canada?

**ESL PROGRAMS FOR ADULTS**

The Adult and Continuing Education Department of the Dufferin-Peel Catholic District School Board offers a variety of courses for Adult English Language Learners including English as a Second Language, Citizenship and Co-Operative programs. These programs are offered throughout Mississauga and Brampton. Registration for many of the programs is on-going. Please see the winter flyer posted on the Dufferin-Peel website at <http://www.dpcdsb.org> or call 905-891-9263

**GENERAL INTEREST COURSES FOR ADULTS**

Discover a new talent, explore a new interest, put a hop in your dance step... Various general interest courses are offered through the Dufferin-Peel Continuing Education Program. Courses begin on February 2, 2009. Visit <http://www.dpcdsb.org> or call 905-891-9263 for more information.

**DATES TO REMEMBER:**

- January 8:** Aboriginal Folklore presentation, grade 8
- January 12:** School Council 6:45 pm
- January 14:** *Early Release Day( no pm classes)*
- January 15:** Spelling Bee
- January 19:** Boy's Intermediate BBall vs St. Sebastian, home
- January 26:** Boat Race Challenge
- January 27:** Swiss Chalet lunch (pre-order only)
- February 5:** Mississauga North Chess Tournament
- February 8:** **JK REGISTRATION 7pm - 9 pm** (9<sup>th</sup> snow date)
- February 10 – 12:** **JK REGISTRATION 9 am - 3 pm**
- February 9:** School Council 6:45 pm
- February 15:** Flag Day
- February 15:** *Family Day, no school*
- February 17:** Ash Wednesday Service 1:15
- February 28:** Royal Canadian Legion Public Speaking Contest
- March 1:** *Professional Activity Day, no school*
- March 13 – 22:** March Break
- March 23:** Reports cards sent home, term 2



**SCHOOL COUNCIL**

Upcoming School Council meetings:

**Tuesday, January 12, 2010**

**Tuesday, February 9, 2010**

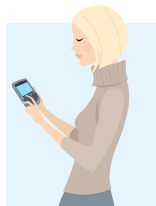
**Our meetings begin at 6:45 p.m. in the Library.**

*Please come out and join us! A hot cup of coffee, and friendly faces will greet you!*

*Something to look forward to...*

January 27: Swiss Chalet Lunch watch for your order forms.

February 13: Dance-A-Thon



## **Junior & Senior Kindergarten Registration for 2010-2011**

**Registration for the 2010-2011 school year  
will be held at all Dufferin-Peel Catholic elementary schools**

*At this time St. Albert of Jerusalem will continue offering a half day program for children entering junior and senior kindergarten. St. Albert of Jerusalem Catholic School was not designated to offer a full day kindergarten program for the 2010 /2011 school year.*

**February 8, 2010 from 7:00-9:00 p.m.**

*\*Snow Date: Tuesday, February 9, 2010 - 7:00 p.m. - 9:00 p.m.*

**February 10, 11, 12 2010 from 9:00-11:00 a.m. and 1:00-3:00 p.m.**



*Junior Kindergarten - Children must be 4 years old by Dec. 31, 2010  
Senior Kindergarten - Children must be 5 years old by Dec. 31, 2010*

**Parents/Guardians should bring the following documents when registering their child:**

- proof of age
- original Roman Catholic Baptismal Certificate (for parent and child) or Baptismal Certificate of other rites in communion with the Holy See of Rome (if the child has not been baptized, a letter of counseling with the parish priest, to complete the process will be accepted)
- updated immunization records
- proof of Canadian citizenship or of Landed Immigrant status
- proof of address (utility bill, bank or credit card statement)
- for schools in Caledon and Dufferin County: emergency rural address numbers for identifying your property

There will be an information session for parents of children with special needs such as vision, hearing, physical, developmental or autism who are entering JK or SK in September 2010. The information session will be held at the Dufferin-Peel Catholic District School Board -- Catholic Education Centre Room 301 on February 4, 2009 from 7:00-8:30 p.m. Parents are also reminded to register their child here at our school office as soon as possible in order to plan a successful entry for September.

**For more information, contact your local Catholic school or call the Admissions Department at 905-890-0708 ext. 24500.**

# **ENSURE THAT YOUR TAX DOLLARS REACH YOUR CHILD'S SCHOOL SYSTEM....**

## **“I Support Catholic Education”**

When you move, your “*Direction of School Support*” automatically defaults your direction to public schools.

**How can I help?** By completing the form: “*Application for Direction of School Support*” and by raising the voice to families and friends.

**Who completes this form?** Any owner of a house; any Catholic person who believes in Catholic Education. You don't have to have children, to complete this form. You don't have to wait until your child reaches school age to become a supporter. You just have to support the Catholic Education by submitting this form.

**When do I complete this form?** When you move, even if your children don't change school, you still have to complete this form.

**Where do I find this form?** In your school office or on line (Google: “*Application for Direction of School Support*”)

**Would I pay more taxes because of this?** NO, this is a declaration where you want your tax to be directed. We want to see Catholic schools continue to exist and flourish.

**How do I find out if I'm correctly registered on the Municipal tax rolls?** Check your Property Assessment Notice that comes every year. Under “*School Support Designation*” make sure it states English Separate (This is the term for English Catholic School Supporter) or call the Dufferin-Peel Catholic District School Board Admissions Department at 905-890-0708 ext. 24500 and they will check the Municipal Rolls database for you.



## **System Survey indicates that Catholic education is strong in Dufferin-Peel schools:**

Forty years have elapsed since the amalgamation of eight local Catholic school boards into a single school district that would provide Catholic education to children and families in the Region of Peel and Dufferin County. Over these four decades, the Dufferin-Peel Catholic District School Board has grown from twenty-seven Catholic elementary schools, in 1969, to one of the province's largest school districts serving approximately 88,000 students in 122 elementary and 23 secondary schools located throughout Mississauga, Brampton, Caledon and Orangeville. With the board's 40<sup>th</sup> anniversary approaching, the Director of Education and Board of Trustees initiated a system review process intended to allow for consultation with the wider Catholic community in Peel and Dufferin on matters related to the board's strengths, challenges, and recommended areas of focus over the next three to five years.

Consisting primarily of surveys and small group meetings, the outcome of this consultative process was intended to provide trustees and senior management in Dufferin-Peel with a better understanding of the interests, concerns and accolades identified by local parents, Catholic school council members, pastors, senior students and recent graduates, unions, and associations. Equipped with the findings from this system review process, the Dufferin-Peel Catholic District School Board can set out in an informed manner on the journey of shaping and building its future.

The results are in and we were gratified to see that there is an overwhelming consensus that our Catholic schools are viewed as distinctly Catholic, safe, healthy, clean and educationally sound places to learn, grow in faith and prepare for post secondary education or the workplace.

Among the findings:

- Catholicity is a strength of this school board and that the Catholic faith is clearly demonstrated in local school communities.
- Dufferin-Peel schools are viewed as a distinct alternative to local public schools.
- Satisfaction with the overall quality of Catholic education in Dufferin-Peel schools is very high.
- Continued funding, vitality and relevance of Catholic education in Ontario is seen as a concern.
- Strong support for the provision and funding of quality core programs on a board-wide basis, rather than support for the funding of specialty programs at the expense of local school programming.
- Support for the board to continue to manage its resources responsibly, with transparency and accountability of financial reporting.
- Calls for increased funding for programs such as special education and/or English Language Learner needs.
- High levels of satisfaction with the safety and cleanliness of schools.
- Dufferin-Peel Catholic schools enhance the character development of students.
- Satisfaction with the level of extra curricular activities, program variety and transportation.

For more information on the Strategic System Review, please contact the school office or call the Communications & Community Relations Department at (905) 890-0708, ext. 24278.