

# ST. ALBERT OF JERUSALEM CATHOLIC SCHOOL JANUARY 2011 NEWSLETTER

7185 Rosehurst Drive, Mississauga ON L5N 7G6  
Phone (905)785-9298 Fax (905) 785-1227  
Board web site: [www.dpcdsb.org](http://www.dpcdsb.org)



## Principal:

S. Steer

## Vice principals:

P. Golin  
D. Carpe

## Secretaries:

T. Ball  
A. Charette  
P. D'Amato

## Superintendent:

D. Oude-Reimerink

## Trustee:

E. O'Toole  
Miss. Wards 9,10  
905-812-5163  
[Esther.otoole@dpcdsb.org](mailto:Esther.otoole@dpcdsb.org)

## Parish:

St. John of the Cross  
6890 Glen Erin Dr.  
(905) 821-1331

## Pastoral Team

Fr. Leo Huard  
Fr. Abraham Kulanjiyil  
Fr. Joseph Kalluvia

## *This Year*

*Mend a quarrel. Seek out a forgotten friend.  
Dismiss suspicion, and replace it with trust.  
Give a soft answer. Encourage youth.  
Manifest your loyalty in word and deed.  
Keep a promise. Find the time. Forgo a grudge.  
Forgive an enemy. Listen.  
Apologize if you were wrong.  
Try to understand. Flout envy.  
Examine your demands on others.  
Think first of someone else. Appreciate.  
Be kind; be gentle.  
Laugh a little. Laugh a little more.  
Deserve confidence. Take up arms against malice.  
Decry complacency. Express your gratitude.  
Have faith. Welcome a stranger.  
Gladden the heart of a child.  
Take pleasure in the beauty and wonder of the earth.  
Speak your love. Speak it again.  
Speak it still once more.  
(Author unknown)*

## Sunday Mass Schedule St. John of the Cross Church

Saturday: 5:00 p.m.  
Sunday: 8:00 a.m., 10:00 a.m., 12:00 p.m. and 5:00 p.m.

**JANUARY'S**

**Virtue ~Self-control**

God has given us the ability to choose. We are able to control how we react to what happens around us. We may feel pressure from inside or from outside ourselves to react violently to a situation. We've all "lost it" at one time or another. We are never proud of those moments. As soon as they happen we make a promise that they will not happen again. Through prayer and concentration, we can get better at controlling our reactions. We can get better at showing *self-control*. Self-control helps us to resist the temptation to do something that we will regret. Self-control helps us to resist the temptation to do something that will harm ourselves or others. Self-control is one of the marks of a spiritually mature person. When we all use self-control, we can be sure that our school will be a safe, caring and inclusive place to live and to learn.

**A person with *self-control*...**

- **Is patient and knows how to wait his/her turn**
- **Can calm him/herself down and think before reacting to situations**
- **Knows how to avoid physical aggression (hitting, kicking, pushing, fighting, etc.)**
- **Can think things through and do what is best for everyone**

**ARE YOU SUPPORTING YOUR LOCAL CATHOLIC SCHOOL?**

Catholic Ratepayers – Check your Tax Bill to Ensure Proper Tax Support. If you are a Catholic ratepayer, we urge you to check your property tax bill to ensure that your support is directed to your local Catholic school board, in our case, the Dufferin-Peel Catholic District School Board.

If you are a tenant, you can verify your support by contacting our Admissions Department at (905) 890-0708, ext. 24511, 24512, or 24519, or your local municipal office.

By ensuring that you are accurately recorded as a Catholic school supporter, you can help deliver a powerful message to the government about the level of support for publically-funded Catholic education in Ontario.

**Ordinary Time**



As we bring to a close the season of Christmas, we begin to settle into the less active, more ordinary season of our wintery lives. The Church as well moves into Ordinary time as the church colours move from celebratory white to green vestments and altar cloths. During the liturgical year of the church, the term "Ordinary Time" may be misleading. In the context of the liturgical year the term "ordinary" does not mean "usual or average." Ordinary here means "not seasonal." Ordinary Time is that part of the Liturgical Year that lies outside the seasons of Lent-Easter and Advent-Christmas. In Ordinary Time, the Church celebrates the mystery of Christ not in one specific aspect but in all its aspects. The readings during the liturgies of Ordinary Time help to instruct us on how to live out our Christian faith in our daily lives.

Ordinary Time in the Church's year occurs in two sections. The first part begins on the Monday following the Christmas season, which ends with the Feast of the Baptism of the Lord on the Sunday following January 6. It lasts through the Tuesday before Ash Wednesday, the beginning of the Lenten season. Ordinary Time resumes after the Easter Season, on the Monday after Pentecost, and continues until evening prayer on the Saturday before the First Sunday of Advent.

During the Liturgical Year, the scripture readings for the seasons of Lent, Easter, Advent, and Christmas have prominent themes. During Ordinary Time the readings are not chosen according to a theme. During the Christmas season, the gospels recount the birth and early life of Jesus. On the Second Sunday of Ordinary Time, the gospel begins to speak about the ministry of Jesus through the text about the wedding feast at Cana and two other passages from the Gospel of John. Then, with the Third Sunday, the life and preaching of Jesus unfold in each of the Gospels. We mark Ordinary Time with the colour green... the colour of growth and life. During Ordinary Time we reflect on how Christ's gospel message can come to new life within our daily lives.



**Continuing with our Catholic Story...The third part of our series on the historical issues related to Catholic Education**

***What sacrifices did Catholics have to make to send their children to separate schools?***

Because the United Legislature of Canada East and Canada West roughly had consisted of members advocating non-denominational common schools and half were in favour of them, separate school legislation, for about fifteen years, contained three obstacles to their existence:

- (a) Catholics could establish and support a separate school, but had to continue paying common school taxes. Thus, they paid tuition for their children in the separate school;
- (b) The separate school had no permanence of existence. If the local common school board hired a Catholic as one of its teachers, then the separate school ceased to exist. Separate schools kept opening and closing in the early years;
- (c) In the cities the separate school board required the permission of the common school board to open a new or an additional separate school. Sometimes the permission was not forthcoming.
- (d) The legislation required twelve Catholic heads of family resident within a city, town or township common school section. The townships' common school sections were so small that often there were not twelve resident Catholic families.

### STUDENT INFORMATION

It is most important that we have up-to-date records of your address, phone numbers, and emergency contacts in the event that the school must contact you regarding your child. If there have been any changes, please ensure that we have this information.



### EMERGENCY SCHOOL PROCEDURES

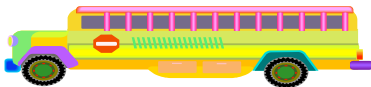
There may be days during the upcoming winter months when inclement weather presents a potential safety hazard to our students. It is essential that parents and children discuss the procedures that they wish to follow for safe arrival at home.

#### **For students that do not take the bus please determine:**

- the best way to walk home;
- with whom the child should walk;
- where the child should go if there is no one at home;
- how the child should seek help if wind and snow are so strong that they cannot see the way home.

#### **For students who do take the bus:**

It is a fact that bad weather may cause delays for student pick up at bus stops. Please ensure that your child has a safe place to go if the bus is late or does not arrive. If you notice that a student is stranded at a bus stop, please attempt to contact the child's parent. It is not recommended that parents volunteer to drive another child to school without the permission of the child's parent. If you decide to transport your child to school because buses have been cancelled, please ensure that you have made arrangements for their return home at the end of the school day.



As the weather worsens please take into consideration that buses may be delayed in reaching their stops. We don't wish to see students stranded out in the elements so, on inclement days, please:

- Listen to the radio for bus cancellations.
- If possible, arrange for car pooling.
- For late pick-up, visit the transportation website [STOPR.com](http://STOPR.com). Wait no more than 15 minutes for a late bus. Contact the school or the above listed website if your bus has not arrived and wait for information regarding arrival.

### SNOW AND ICE

Snow is part of our winter life in Canada, providing both frustration and enjoyment. We all like to play in it. Throwing snowballs and sliding on ice is fun. However, snow and ice can be very dangerous. Most injuries happen during wintertime. For safety reasons, our school rule must be that snow stays on the ground – no snowballs, kicking snow or any other activity with snow or ice that could be harmful, which includes sliding on slopes. Although snow piles offer lots of fun for sliding, it is very difficult to ensure student safety when numerous students are sliding at the same time. Thank you for taking the time to reinforce these safety rules with your children.



### SCHOOL LOCKDOWN DRILL

It is a policy of the Dufferin-Peel CDSB that all schools conduct a practice of "Lockdown Procedures" at least twice a year. This procedure will be initiated should an emergency exist on school property or in the surrounding neighbourhood.

Listed are the procedures that our students have been trained to follow. Teachers regularly practice this precautionary drill with their classes and the school has held two formal practices this year.

Upon hearing the announcement "Initiate Lockdown Procedures":

- The lockdown bell sequence will be repeatedly rung.
- All students and staff inside the building will remain in their classrooms.
- Students in the hallways or washrooms will go to the closest classroom.
- Students in classrooms will remain in their classroom, in a corner of the room which is out of the sightline of all windows and doors.
- All students and staff who are outside the building will be in communication with the office through a walkie-talkie. Direction will be provided based upon the situation.
- The announcement "Lockdown Procedures complete" will indicate the completion of the drill.

## INDOOR SHOES

Please ensure that your children have a pair of labelled shoes to put on at school during the winter season. If the fire alarm sounds and/or we need to leave the building, there may not be time for students to put on their boots.



## LOST AND FOUND

We often find lost items at St. Albert of Jerusalem School. Items such as shoes, hats, jackets, gloves, etc. are collected and placed in the lost and found box.

Please have a look to see if any items belong to your child. At the end of the school year, all remaining items will be donated to charity.



## VALUABLES AT SCHOOL

*Please remember that Board policy prohibits the use of personal electronic devices at school, especially cell phones.* During the school day, these devices must be turned off and kept in a secure location such as a backpack. Staff cannot be responsible for any valuables that your child brings to school. Although we do our best to ensure that personal items are kept safe, we cannot always monitor money, jewelry, electronics, toys, etc. It is best if these items are kept at home. We also caution that MP3 players and Ipods are lucrative items that are easily stolen on the way to and from school. Please don't put your children at risk by allowing these items to come to school.



## USE OF SCHOOL PHONES

Our office is limited in the amount of incoming and outgoing calls it can accommodate. Telephone lines need to be available for emergencies, daily school business and parent calls. Students will only be permitted to use the school phone in cases of emergency. An emergency is considered to be an illness or injury.

## OUTDOOR RECESS



Our students need to bring the necessary clothing and shoes/boots with them in order to ensure that they are dressed appropriately to meet the challenges of the winter season. Our school policy is that recess is a part of the school day. If a student is too ill to participate in all components of the school day, including recess, please do not send him/her to school. If there are specific medical reasons which should exclude a child from going outside, please submit a doctor's note to the office. This note should indicate the reason and the time period for the modified recesses. We have guidelines from the Health Department which help us make a decision as to whether it is too cold for students to go outdoors:  $-20^{\circ}\text{C}$  is a modified day;  $-25^{\circ}\text{C}$  students stay indoors. During modified school days students will be outdoors for am and pm recesses and no longer than 20 minutes at lunch recess.

## FLEXIBLE BOUNDARY POLICY

Currently St. Albert of Jerusalem houses 864 students. At this population we are comfortable within the building. Many students attend our school under the "Flexible Boundary Policy". This offers convenience for many parents as they access daycare in the area. Parents who have requested flexible boundary admittance for their children must be aware that the policy will be considered on a student-by-student basis, taking into consideration the class size of the students who are enrolling. Although we offer as much support as possible to all our students, please understand that the availability of the flexible boundary policy should not negatively impact on the school resources. As always, please call the school if you have any questions concerning this policy.



## VISITOR AND PARENT SIGN IN... A MUST

It is important for the safety of all students in the school that parents wear a visitor's sticker. Please always sign in at the office and obtain your visitor's sticker. It takes only a minute to help keep your children safe. Students and staff feel safer when a visitor's sticker is visible on unfamiliar faces as well as familiar ones.

Thank you so very much to those parents who always take the time to sign in. Your cooperation is appreciated.

## STUDENT PUNCTUALITY

Punctuality is a necessary life skill that if practiced now, will be beneficial in the future. Arriving early or promptly for your day at work enables you to compose yourself and ease gently into your environment. Children who arrive late are often out-of-sorts and rushed into beginning their day. Their time to socialize and greet their peers is lost in their hurried entry into the classroom. It is the school expectation that students are in their line-ups by 8:28 a.m. and 12:28 p.m. Late arrival disturbs the class and interrupts lessons. Late arrival is not healthy for your child. It places them in a rushed frame of mind, making them feel like they have to catch up. Even a few late minutes makes a difference. For those parents that ensure early arrival for their children, thank you. For those who are regularly late, please make every effort to arrive between 8:15 and 8:25 a.m., and prior to 12:25 p.m. If by chance students are late, we ask that they obtain an admit slip from the office. This admit slip is not meant as a punishment. It is an important link in our safe entry process. When a child is alerted to the office as absent, the secretary cross-references to students who have entered late before making calls home to confirm a child reported as absent.

If you feel there is a discrepancy between our bell and your time, please visit [www.timeanddate.com](http://www.timeanddate.com) and synchronize.

### Late Intermediate Students:



Intermediate students who are continually late, cause additional concern.

Secondary schools begin classes at 8:05 a.m. This means that students who are in the habit of arriving between 8:35 – 9:00 a.m. will be at risk of missing and perhaps failing their first period class.

The skill of punctuality must be instilled early. Children do not necessarily understand or respect the consequences of tardiness. Please help us help them.

## TRANSPORTATION

A decision to cancel school transportation and/or close schools, due to inclement weather, is usually made by 6:30 AM. Only the Director of Education has the authority to cancel transportation and/or close schools. Announcements are posted on the Dufferin-Peel website at **STOPR.com** and are made on the following radio stations:



CKFM – 99.9 FM	CFNY – 102.1 FM
CHIN – 100.7 FM, 1540 AM	CFRB – 1010 AM
CHUM – 1050 AM	DC103FM
CJCL – 590 AM	CHAY – 93 FM
CFTR - 680 AM	Q107 – 107.1 FM
CHFI – 98.1 FM	CJMR – 1250 AM
JACKFM – 92.5 FM	TALK640 – 640 AM
CBC – 740 AM	CHEZ ZP7.3
CIAO – 530 AM	CJBC (Fr.) 86

## DRIVE THROUGH LANES AND KINDERGARTEN

### ....SAFETY BEFORE CONVENIENCE

Please be aware that all of the lanes at the front of the school are no-parking areas. The centre lane, entrance and exit lanes and bus lanes must allow access to school buses and emergency vehicles and need to be respected as no parking areas. **Do not use these lanes for stopping or parking at any time of the school day.**

Drivers who leave their vehicles unattended in these lanes seriously jeopardize public safety, not only by blocking the fire route, but also by creating a traffic backup onto the street. Parents wishing to park may do so either east or west of the school on Rosehurst Drive or one the streets nearest the school. The parking lot next to the school building is designated as **staff and visitor parking only.**

Parents picking up children should **never** leave vehicles unattended in the lanes in front of the school. Please assist us in maintaining safe access for buses and safety vehicles by **never** parking your vehicle in these lanes.

We would also like to remind parents that schoolyard supervision does not begin until 8:15 a.m. **Students should not be arriving before this time, as the playground is not supervised.**



## PA-RUM-PA-PA-PUM

Our annual Christmas Concert was an overwhelming success for our children and a delight to everyone fortunate enough to witness it. The young talents and voices of our primary students raised the roof on December 16<sup>th</sup>.



We thank each and every child, our primary division staff and especially Ms. Habre for bringing such wonder and joy to the Christmas season.

## ST. ALBERT AT THE MOVIES



The student population looks forward to our first series of student movie nights. Your School Council has worked diligently to

obtain licensing to see pre-released versions of movies. We will begin by offering a presentation of *Despicable Me* for primary level students, their siblings and parents on January 13, 2011. Seating will be limited, so get your tickets early. Our junior movie night is scheduled for Friday, February 25, 2011. An Intermediate movie and pizza night will be scheduled, after school, early in the spring.

## INTERNATIONAL LANGUAGES

Elementary international language Saturday classes are available to students in grades JK to 8. No prior language experience is necessary. International Language programs comply with the Ministry of Education curriculum. Please contact the Adult and Continuing Education Office at 905- 891-9263 for information regarding language offerings as well as registration information.

## EXTENDED FRENCH PARENT MEETING

Parents of senior kindergarten or grade four students who wish to enroll their child in the grade one or grade five Extended French for September 2011, are invited to attend information meetings as follows:

A meeting for parents of **senior kindergarten** students who would attend Divine Mercy will be held on Thursday, January 13, 2011 at St. Gertrude School.

A meeting for parents of **grade four** students will be held at St. Therese of the Child Jesus School on Thursday, January 13, 2011, at 7:00 p.m.

Applications for the Extended French Program will be accepted until 3:00 p.m. on Wednesday, February 9, 2011.

## STUDENT/PARENT/TEACHER CONFERENCES

First term report cards will be sent home on Tuesday, February 1st, 2011. Along with the report card, you will receive a confirmation time for your report card conference. This conference will include the student, the teacher and the parents/guardians. Conference request forms will be sent home on January 12, 2011. During this first conference, teachers would like to see and speak with all parents and students in order to discuss the first term and also to make plans and set goals for the second term.

Conferences for first term reports will be held on February 3<sup>rd</sup> from 3:30 – 9pm and during the day of February 4<sup>th</sup>.



## ANGER MANAGEMENT *Why do kids get angry?*

Anger is a completely normal human feeling - even for young people. Kids experience the same range of feelings as adults, including anger. All of these emotions are healthy if they are managed in a positive way.

### *What happens when anger is not managed well?*

When anger is not managed well it can build up inside a person. This can lead to health problems such as depression or may result in angry outbursts. Parents may see their children having problems with school work, relationships, self-esteem and coping skills.

### *Tips for Parents*

- Teach your child to recognize all feelings including anger and encourage your child to label their angry feelings.
- Model a good example; express your anger in a direct, non aggressive way.
- Encourage your child to talk about their feelings to you or anyone they trust
- Talk with your child about why they feel angry; sometimes the reasons may not be obvious.
- Encourage regular physical activity to help reduce stress. Stressed children cannot cope with their anger positively.
- Help your child to see the humour in situations; it's better to laugh at situations than to act out in anger.

If your child's anger problems are serious, consult your family doctor or call Region of Peel – Public Health at 905-799-7700 or visit [peelregion.ca/health](http://peelregion.ca/health)

**ELECTRONIC NEWSLETTERS!**

In our ongoing efforts to be more environmentally caring at St. Albert of Jerusalem Catholic Elementary School, we are trying to conserve paper and electricity by posting our newsletters on our website. We would like to improve this process, by asking you to provide us with an email address that we will use to send the newsletter directly. Please complete and return the yellow form to your child's teacher by January 13th in order that we can begin to send you our newsletters via email.

**ESL PROGRAMS FOR ADULTS**

The Adult and Continuing Education Department of the Dufferin-Peel Catholic District School Board offers a variety of courses for Adult English Language Learners including English as a Second Language, Citizenship and Co-Operative programs. These programs are offered throughout Mississauga and Brampton. Registration for many of the programs is on-going. Please see the winter flyer posted on the Dufferin-Peel website at <http://www.dpcdsb.org> or call 905-891-9263

**GENERAL INTEREST COURSES FOR ADULTS**

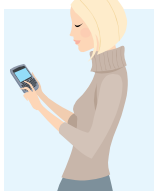
Discover a new talent, explore a new interest, put a hop in your dance step... Various general interest courses are offered through the Dufferin-Peel Continuing Education Program. Registration deadline is January 21, 2011. Visit <http://www.dpcdsb.org> or call 905-891-9263 for more information.

**DATES TO REMEMBER:**

- January 6:** Byzantine Christmas
- January 10:** Spelling Bee @ 1:00 pm
- January 11:** School Council 6:45 pm & JK/SK Dental screening
- January 12-13:** See and Hear sight and vision screening
- January 13:** Primary Movie Night
- January 14:** P.A. Day
- January 18:** Dental Screening grade 2 & 8
- January 20:** **Immunizations:** Gr. 7 Meningitis / Gr. 8 Hep't B
- January 25:** Boat Race Challenge
- February 1:** Report cards sent home
- February 3:** Report card interviews  
Lunar New Year
- February 4:** P.A. Day, interviews
- February 7:** **JK REGISTRATION 7pm - 9 pm (8<sup>th</sup> snow date)**
- February 8:** School public speaking competition junior am/intermediates pm
- February 9 – 11:** **JK REGISTRATION 9 am - 3 pm**
- February 9:** Parent Presentation: FACEBOOK 101 7:00 pm
- February 10:** Dance-A-Thon
- February 14:** Friendship Liturgy
- February 15:** Flag Day
- February 17:** Family of Schools Public Speaking
- February 21:** *Family Day, no school*
- February 25:** Grade 8 Graduation Photos
- February 27:** Royal Canadian Legion Public Speaking Contest
- March 8:** Mississauga North Chess Tournament
- March 9:** Ash Wednesday Service
- March 13 – 20:** March Break



**SCHOOL COUNCIL**



Upcoming School Council meetings:

- Tuesday, January 11, 2011**
- Wednesday, March 2, 2011**
- Tuesday, April 12, 2011**
- Wednesday, May 25, 2011**

Our meetings begin at 6:45 p.m. in the Library.

*Please come out and join us...  
Friendly faces look forward to greeting you!  
Please contact the school office if you will require babysitting during the meeting.*

*Something to look forward to...*

- January 13:** Primary student's Movie Night
- Tuesday, February 9, 2011:** Keynote Speaker Chris Vollum, FACEBOOK 101 for parents (see attached flyer)
- February 10:** Student Dance-A-Thon

## **Junior & Senior Kindergarten Registration for 2011-2012**

**Registration for the 2011-2012 school year  
will be held at all Dufferin-Peel Catholic elementary schools**

*At this time St. Albert of Jerusalem will continue offering a half day program for children entering junior and senior kindergarten. St. Albert of Jerusalem Catholic School was not designated to offer a full day kindergarten program for the 2011 /2012 school year.*

**February 7, 2011 from 7:00-9:00 p.m.**

*\*Snow Date: Tuesday, February 8, 2011 - 7:00 p.m. - 9:00 p.m.*

**February 9, 10, 11 2011 from 9:00-11:00 a.m. and 1:00-3:00 p.m.**



*Junior Kindergarten - Children must be 4 years old by Dec. 31, 2011  
Senior Kindergarten - Children must be 5 years old by Dec. 31, 2011*



**Parents/Guardians should bring the following documents when registering their child:**

- proof of age
- original Roman Catholic Baptismal Certificate (for parent and child) or Baptismal Certificate of other rites in communion with the Holy See of Rome (if the child has not been baptized, a letter of counseling with the parish priest, to complete the process will be accepted)
- updated immunization records
- proof of Canadian citizenship or of Landed Immigrant status
- proof of address (utility bill, bank or credit card statement)
- for schools in Caledon and Dufferin County: emergency rural address numbers for identifying your property

There will be an information session for parents of children with special needs such as vision, hearing, physical, developmental or autism who are entering JK or SK in September 2011. The information session will be held at the Dufferin-Peel Catholic District School Board -- Catholic Education Centre Room 301 on January 26, 2011 from 7:00-8:30 p.m. Parents are also reminded to register their child here at our school office as soon as possible in order to plan a successful entry for September.

**For more information, contact your local Catholic school or call the Admissions Department at 905-890-0708 ext. 24500.**