

Contents

- 1. Introduction**
- 2. Configuring Source PC (Windows 2000)**
 - a. Set Network Connection**
 - b. Add Protocols and Services**
 - c. Set Static IP Address**
- 3. Configuring Destination PC (Windows XP)**
 - a. Set Network Connection**
 - b. Set Static IP Address**
- 4. Connecting Source and Destination PCs**
- 5. Connection Prerequisites**
 - a. Assign the same workgroup name for both the PCs**
 - b. Confirming connection between both the PCs**

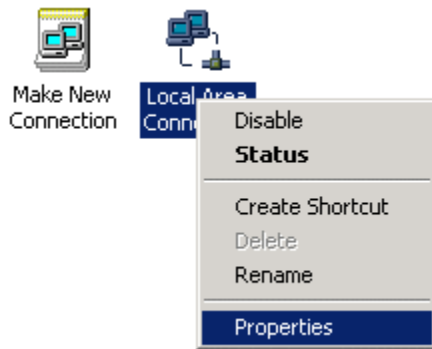
1. Introduction

This document will guide the StepUp user to establish direct crossover connection in Source and Destination PCs and also explains the user to set basic network settings in both the PCs. StepUp is designed to migrate data, settings and applications from source PC to the destination PC. Before migrating your data you need to establish network connection, set static IP address and have to connect Source and Destination PCs. This document helps you in setting all the necessary things to migrate data from source PC to the destination PC.

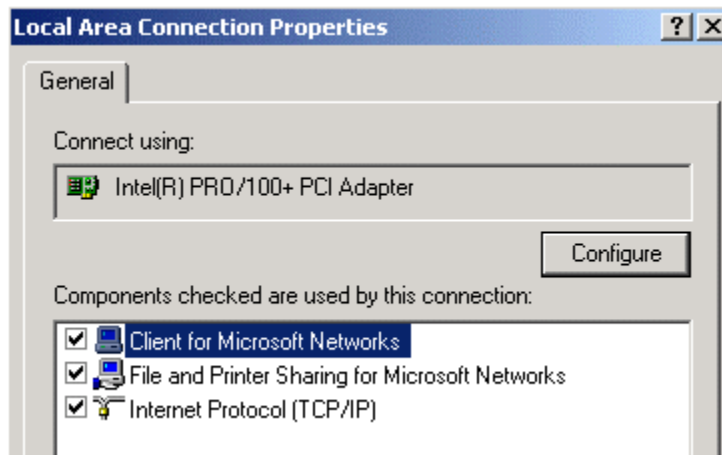
2. Configuring Source PC (Windows 2000)

a. Set Network Connection

- Click on **Start >Settings>- Control Panel**. Select **Network and Dial-up Connection**
- Right-Click on **Local Area Connection**. Select **Properties**.



1. Click on **Networking** Tab - Check that the following components are installed:
 - ✓ Client for Microsoft Networks
 - ✓ Internet Protocol (TCP/IP)
 - ✓ File and Printer Sharing for Microsoft Networks



b. To Add Protocols and Services

If you are missing any one of the above components, click the **Install** button and add components as shown below:

- To Install Client For Microsoft Networks
Select **Client** and select **Add**, select **Client for Microsoft Networks**. Click **OK**.
- To Install Protocols

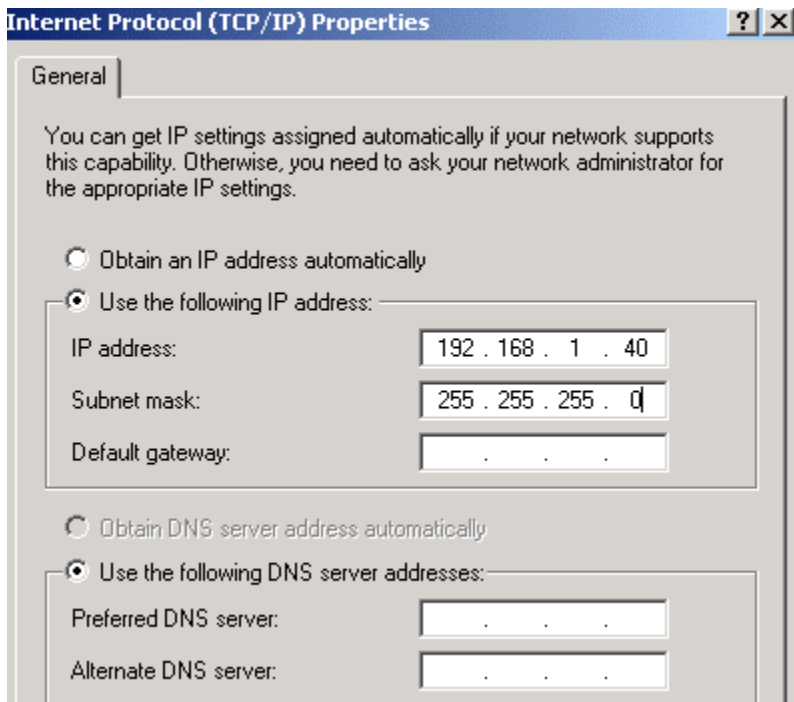
Direct Cross Over Connection Setup: Windows 2000 to Windows XP

- Select **Protocol**, select **Add**, and select **Microsoft**, select **TCP/IP Protocol**. Click **OK**.
- To Install File and Printer Sharing for Microsoft Networks
Select **Service**, select **Add** and select **File and Printer Sharing for Microsoft Networks**. Click **OK**. Click **Close**.

c. Set Static IP address

The IP Addresses must be different in both the source and destination PCs.

- Highlight **Internet Protocol (TCP/IP)**
- Click **Properties**
- Select **Use the following IP address**
 - In IP address type **192.168.1.40**, the IP addresses must be different in both the PCs.
 - In Subnet Mask type **255.255.255.0**



Source PC	Destination PC
IP Address: 192.168.1.40	IP Address: 192.168.1.50
Subnet Mask: 255.255.255.0	Subnet Mask: 255.255.255.0

- You can leave blank **Default Gateway, Primary DNS & Alternate DNS**
- Click **Ok** to close Internet Protocol Properties Window
- Click **Ok** to close Local Area Connection Properties.

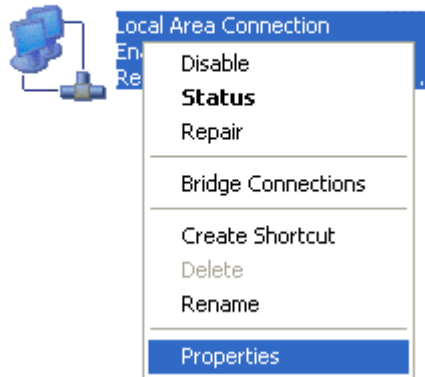
3. Configuring Destination PC (Windows XP)

a. Set Network Connection

- Click on **Start > Settings > Control Panel > Select Network Connections**
- Right Click on **Local Area Connection**, Select **Properties**.

Direct Cross Over Connection Setup: Windows 2000 to Windows XP

LAN or High-Speed Internet

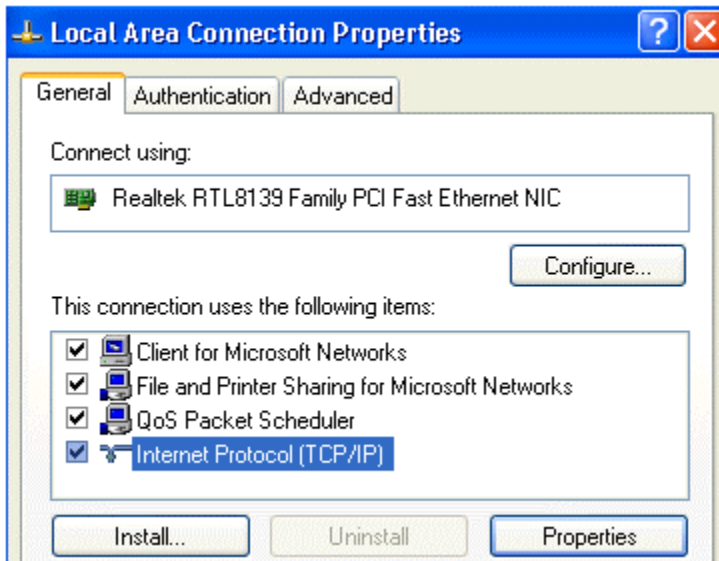


- Make sure all protocols and services are installed / checked, you should see:
 - Client for Microsoft Networks (shows a grayed-out checkbox, this is normal)
 - Internet Protocol (TCP/IP)
 - File and Printer Sharing for Microsoft Networks
 - QoS Packet Scheduler (shows a grayed-out checkbox, this is normal)

b.Set Static IP Address

The IP Addresses must be different in both the source and destination PCs.

8. In the General tab, Highlight **Internet Protocol (TCP/IP)**
9. Click **Properties**



10. Select **Use the following IP address**
11. In IP address type **192.168.1.50**
12. In Subnet Mask type **255.255.255.0**

Source PC	Destination PC
IP Address: 192. 168.1. 40	IP Address: 192. 168. 1. 50
Subnet Mask: 255.255.255.0	Subnet Mask: 255.255.255.0

Direct Cross Over Connection Setup: Windows 2000 to Windows XP

13. You can leave blank **Default Gateway, Primary DNS & Alternate DNS**
14. Click **Ok** to close Internet Protocol Properties Window
15. Click **Ok** to close Local Area Connection Properties

Note: *By default Windows XP comes with the above protocols. No need to add manually.*

Important Notes:

*You must log on as an Administrator to make or add any of the above changes.
You must install Ethernet Card in your PC to use Direct Crossover cable.
Make sure that you have same workgroup name in both PCs.
In source and destination PCs the static IP Address must be different.*

4. Connecting Source and Destination PCs

Connect the LAN Crossover cable in both the PC's network card. Start using **StepUp** to migrate data from Source PC to the Destination PC.

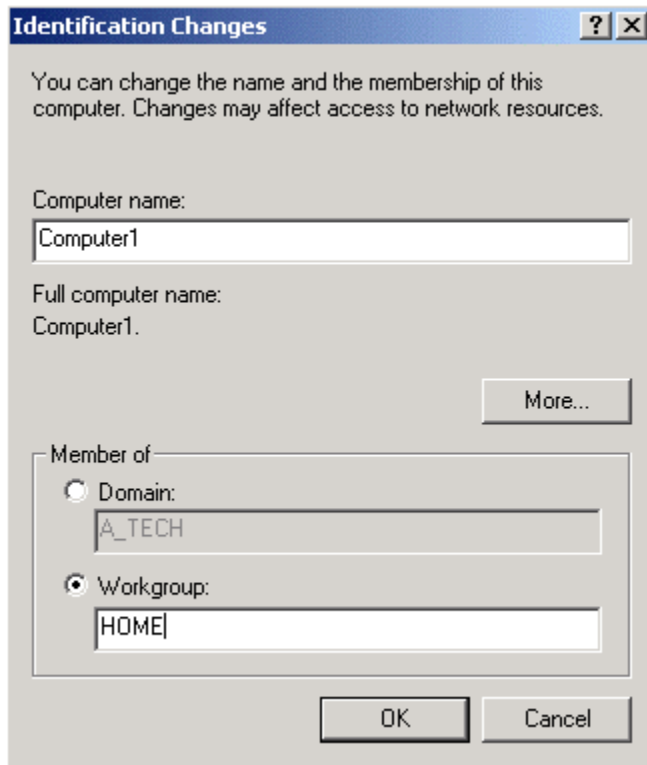
5. Connection Prerequisites

a. Assign the same workgroup name for both the PCs

For Windows 2000

1. Open **System** in Control Panel.
 - Click on **Start** button on Windows Task Bar.
 - Click on **Settings**.
 - Click on Control Panel.
2. On the Network Identification tab, click **Properties**.
3. Under *Member of*, verify whether the workgroup name is the same as the destination PC's workgroup.

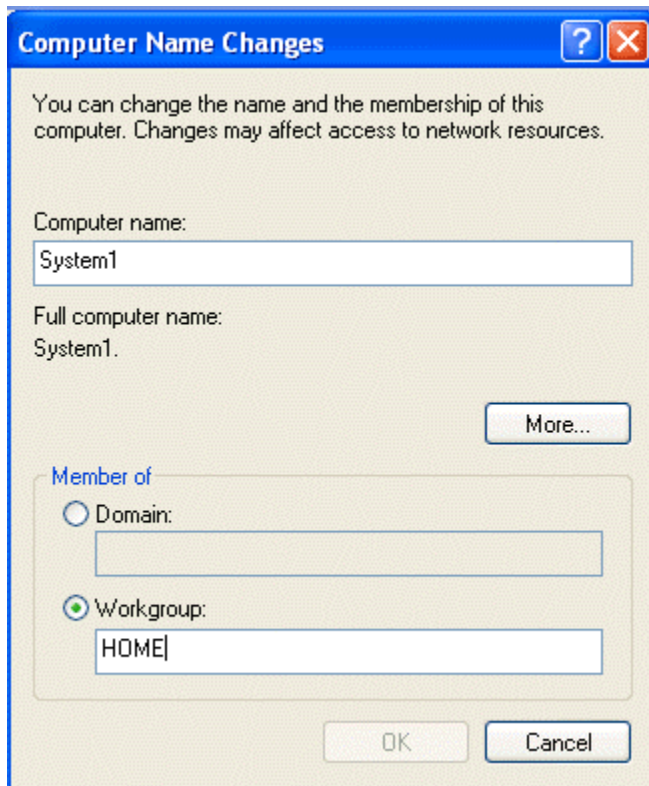
Direct Cross Over Connection Setup: Windows 2000 to Windows XP



- **Computer Name** - Each computer must have a **unique** "Computer Name." For example, "**Computer1**".
- **Workgroup** - The workgroup name should match your Destination PC (Windows XP) workgroup name.

For Windows XP

- To open **Network connection**, click on **Start > Control Panel > Network Connections**.
- On the Network Connections, select **Advanced** option and click Network Identifications. Click on **Computer Name** tab.



- On the Computer Name tab, click on **Change** button to make the changes. Under **Member of**, verify whether the workgroup name is the same as the source PC's workgroup.

b. Confirming connection between both the PCs

Use ping command to confirm whether the connection is established between both the PCs. Click **Start >Programs > Accessories** and then click **Command Prompt**

- In Command Prompt type **ping <SourcePCName>**

```
C:\>ping system2

Pinging system2 [192.168.1.30] with 32 bytes of data:

Reply from 192.168.1.30: bytes=32 time<10ms TTL=128
Reply from 192.168.1.30: bytes=32 time<10ms TTL=128
Reply from 192.168.1.30: bytes=32 time<10ms TTL=128
Reply from 192.168.1.30: bytes=32 time<10ms TTL=128

Ping statistics for 192.168.1.30:
    Packets: Sent = 4, Received = 4, Lost = 0 (0% loss),
    Approximate round trip times in milli-seconds:
        Minimum = 0ms, Maximum = 0ms, Average = 0ms
```

For example, if the Source PC Name is **system2** then,

Direct Cross Over Connection Setup: Windows 2000 to Windows XP

You will receive a message "reply from 192.168.1.30: bytes=32 time<10ms TTL=128"
192.168.1.30 is the IP address you assigned for Source PC.