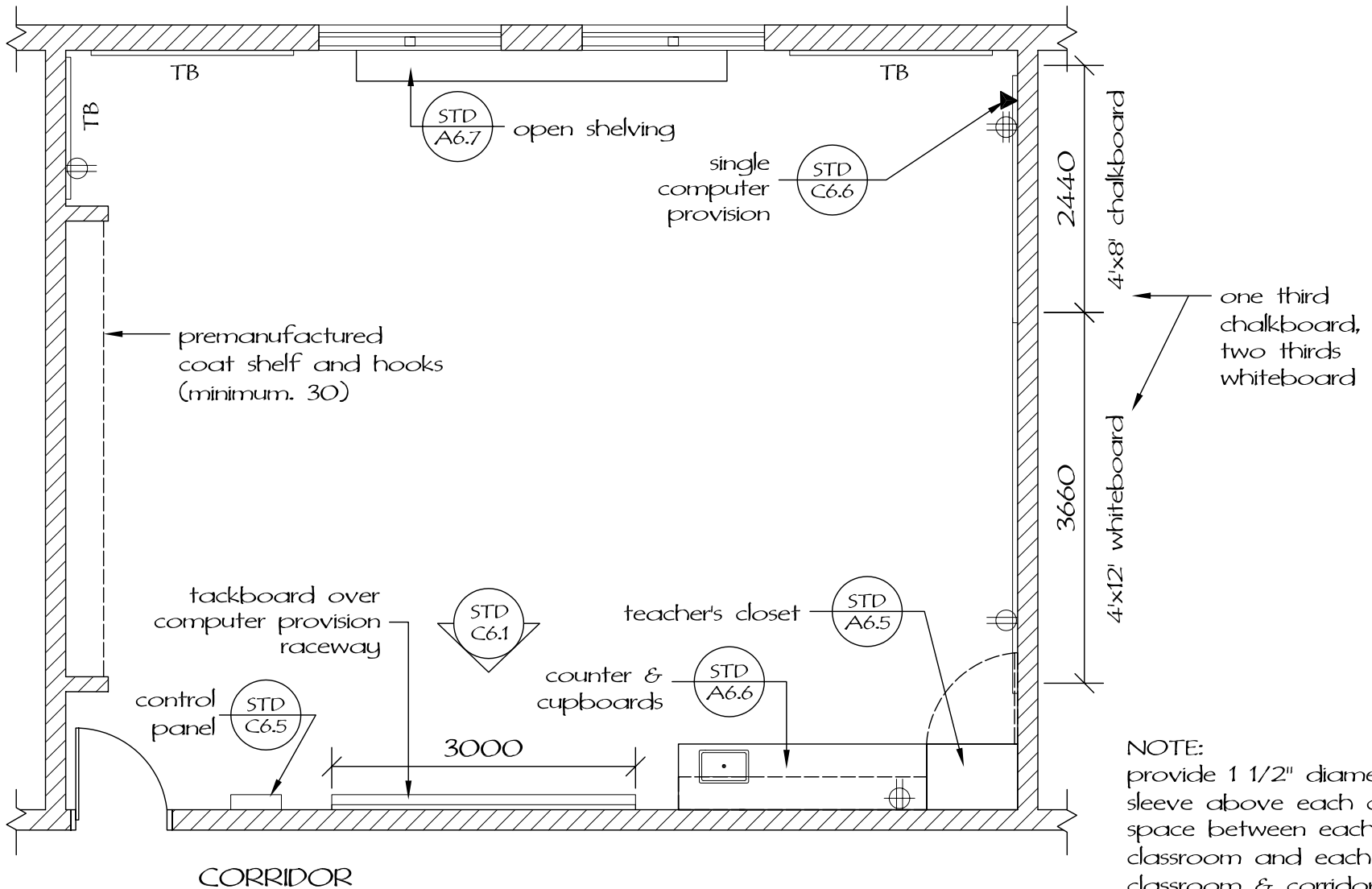


STANDARD CLASSROOMS  
PREFERRED 1st FLOOR CLASSROOM LAYOUT

date: March 2003  
drawn by: C.C.

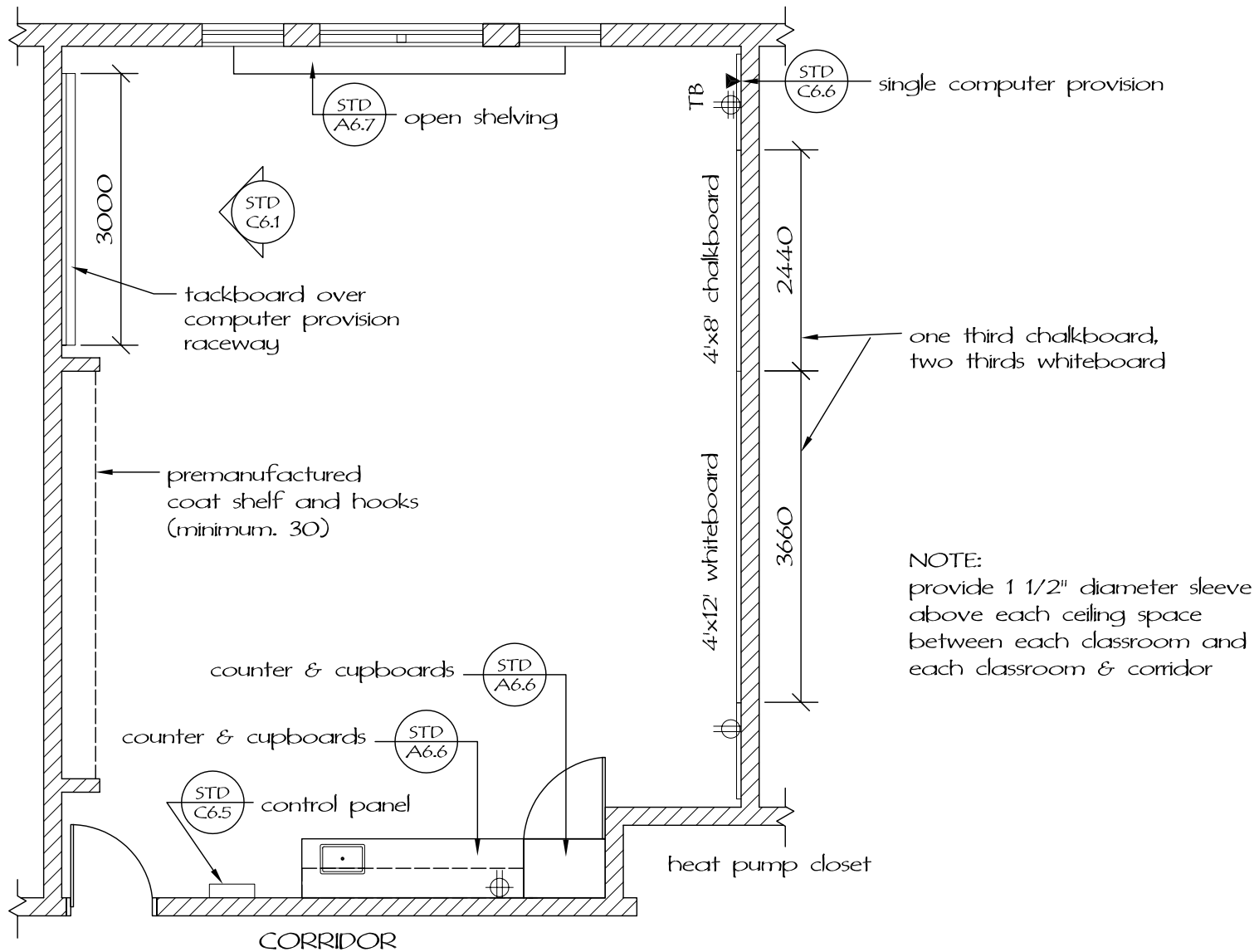
drawing no: STD - A6.1  
elementary



STANDARD CLASSROOMS  
OPTIONAL 1st FLOOR LAYOUT

date: March 2003  
drawn by: C.C.

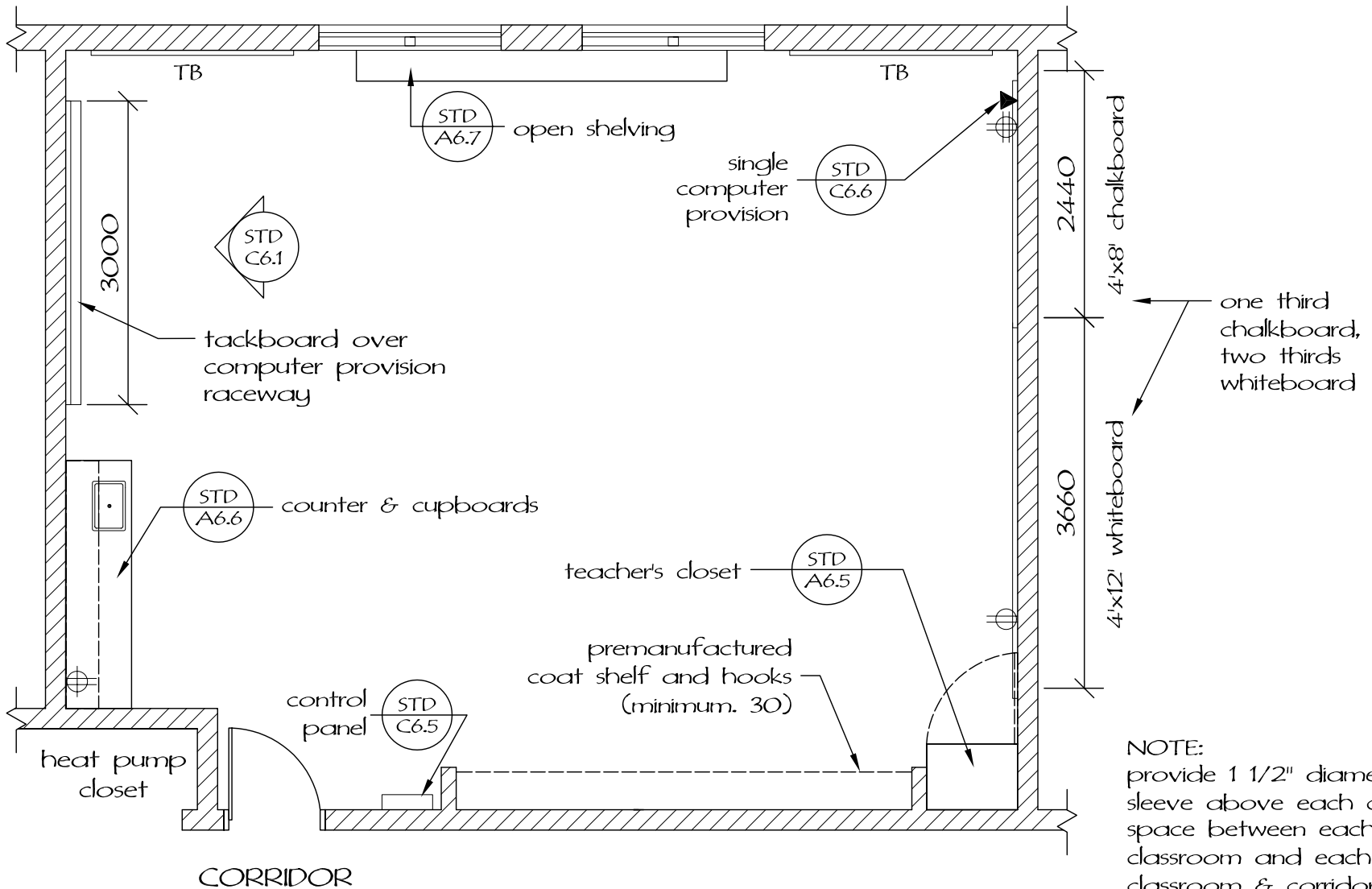
drawing no: STD - A6.2  
elementary



STANDARD CLASSROOMS  
 PREFERRED 2nd FLOOR CLASSROOM LAYOUT

date: March 2003  
 drawn by: C.C.

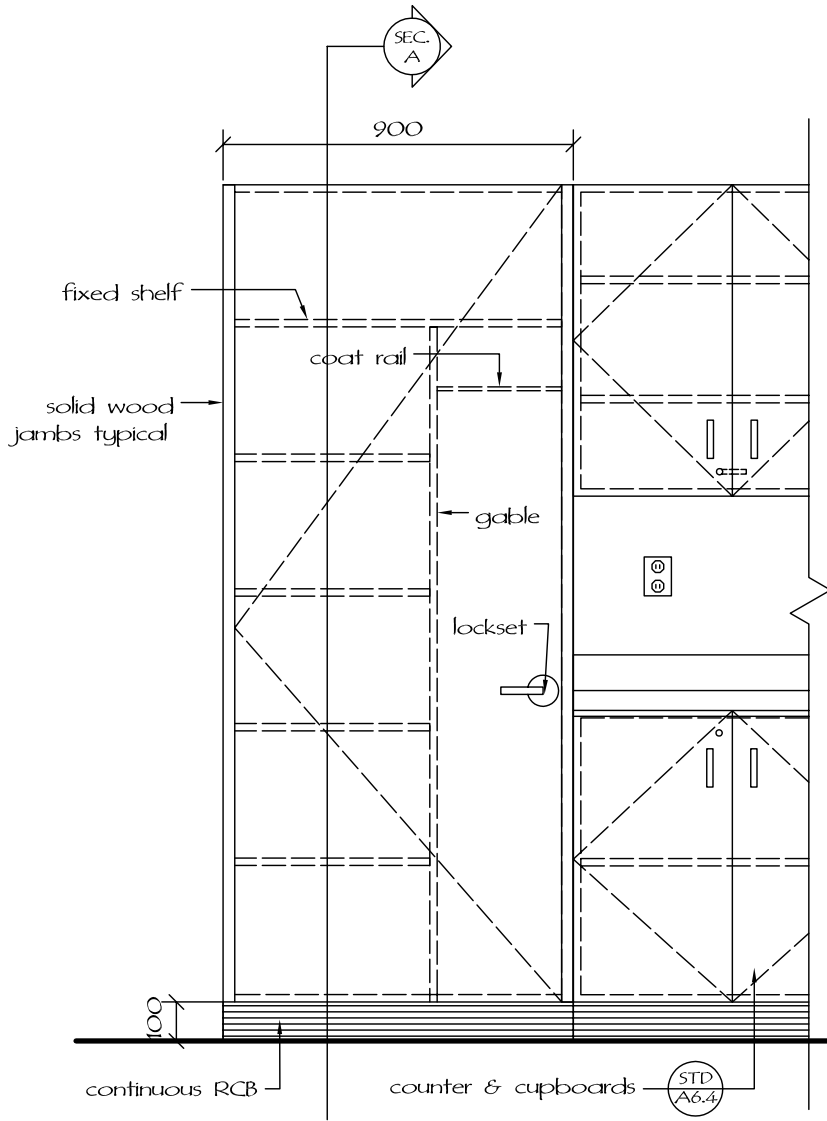
drawing no: STD - A6.3  
 elementary



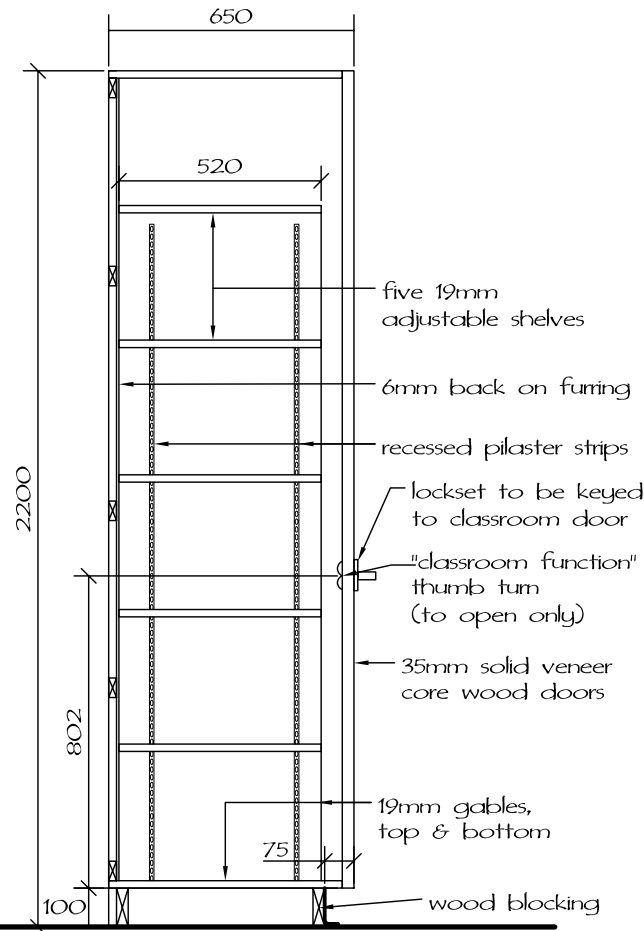
STANDARD CLASSROOMS  
OPTIONAL 2nd FLOOR LAYOUT

date: March 2003  
drawn by: C.C.

drawing no: STD - A6.4  
elementary

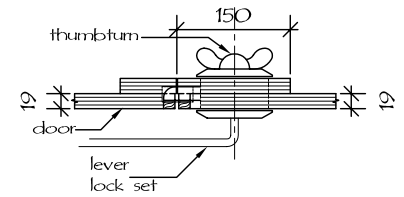


FRONT ELEVATION

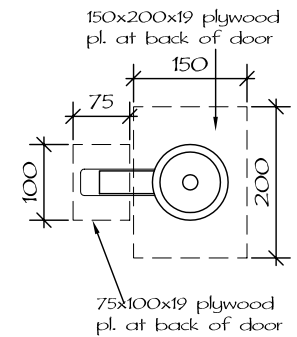


SECTION A

LOCK DETAILS



SECTION



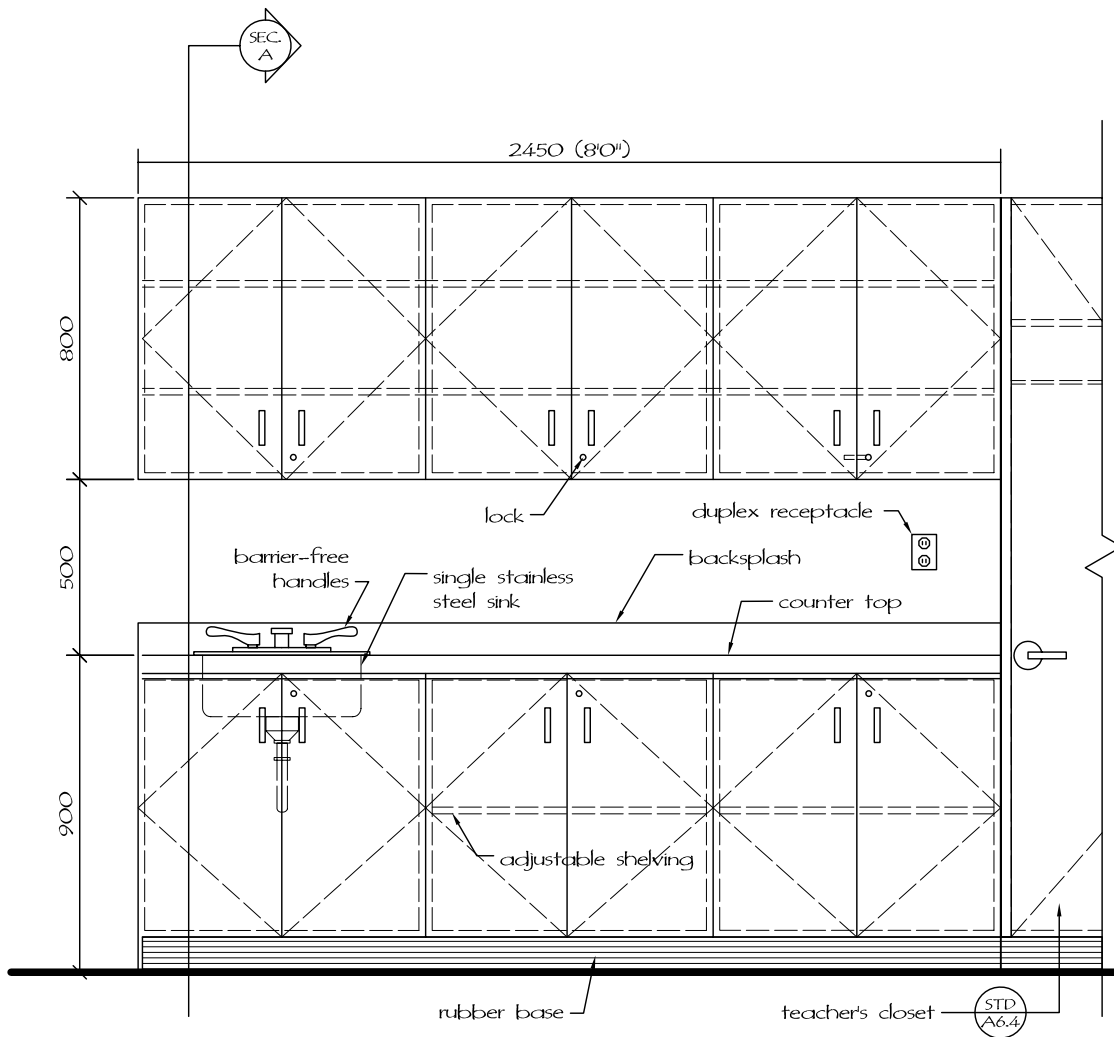
ELEVATION



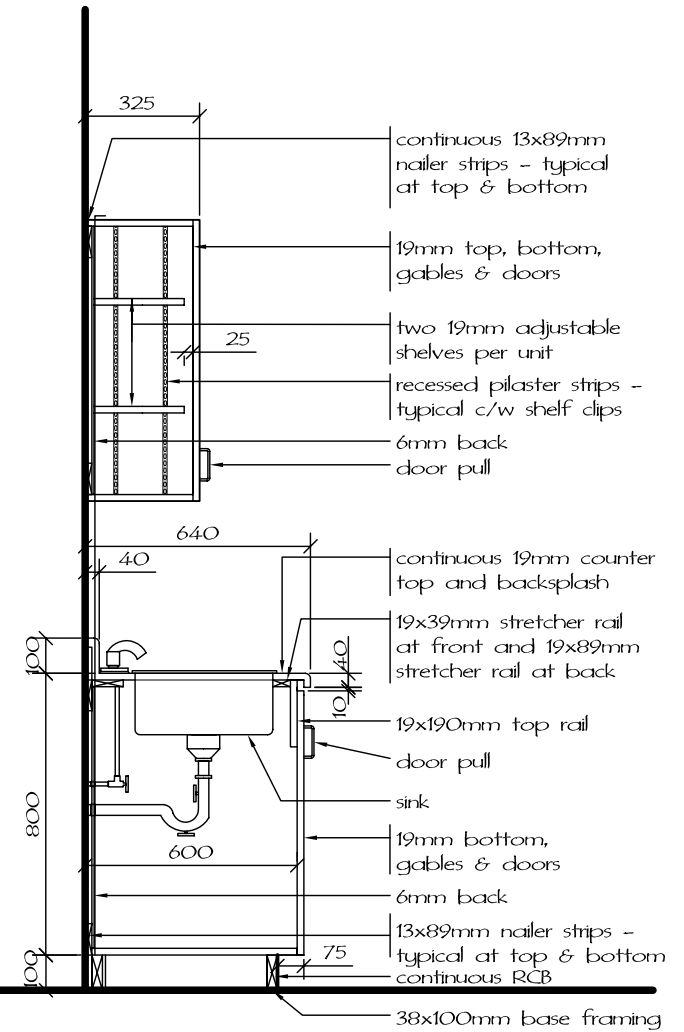
STANDARD CLASSROOMS  
TEACHER'S CLOSET

date: March 2002  
revision: March 2003  
drawn by: C.C.

drawing no: STD - A6.5  
elementary



FRONT ELEVATION



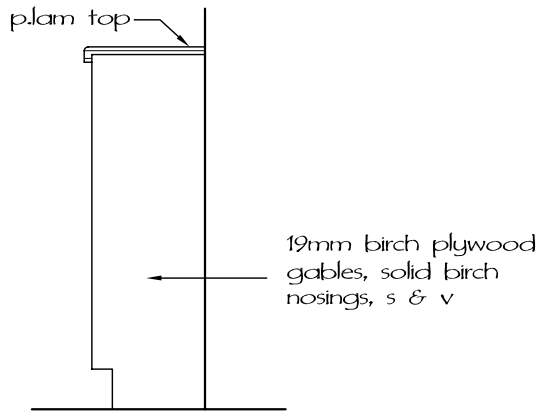
SECTION A



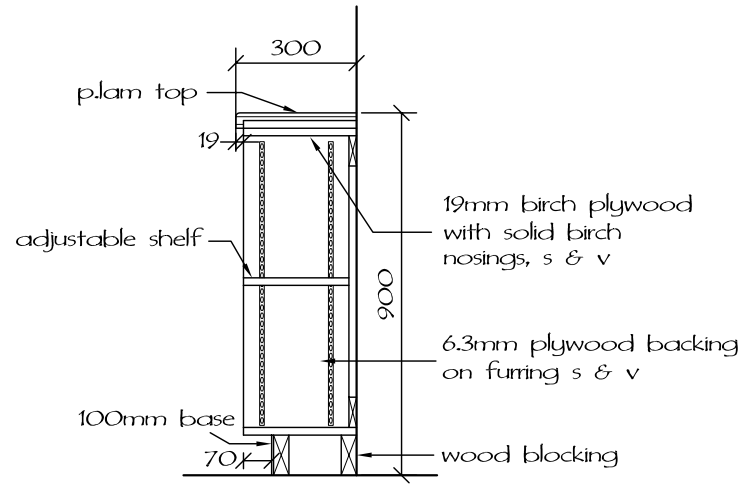
STANDARD CLASSROOMS  
COUNTER & CUPBOARDS

date: February 2002  
revision: March 2003  
drawn by: C.C.

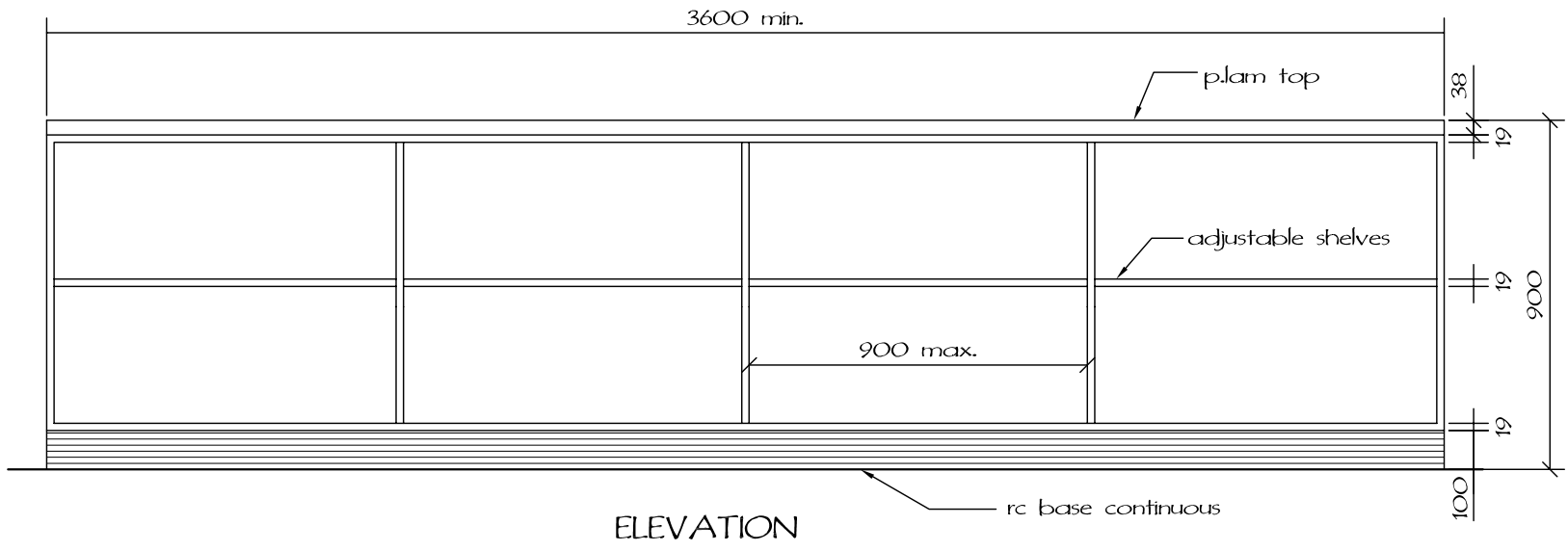
drawing no: STD - A6.6  
elementary



SIDE ELEVATION



SECTION



ELEVATION



STANDARD CLASSROOMS  
OPEN SHELVING

date: November 2002  
 revision: February 2003  
 drawn by: C.C.

drawing no: STD - A6.7  
 elementary