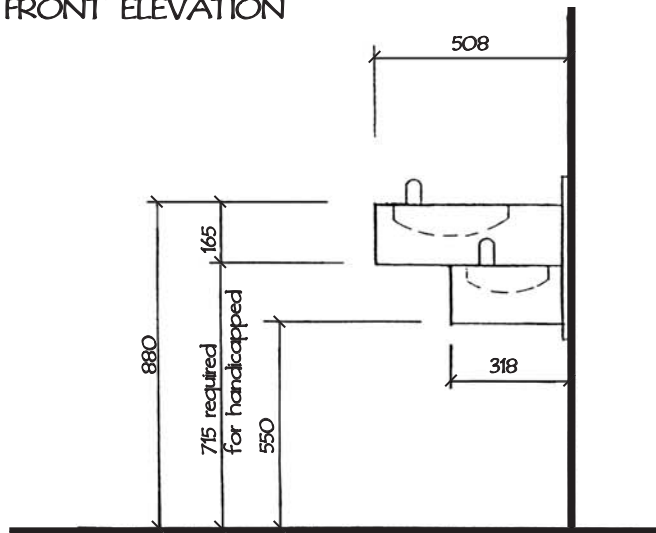
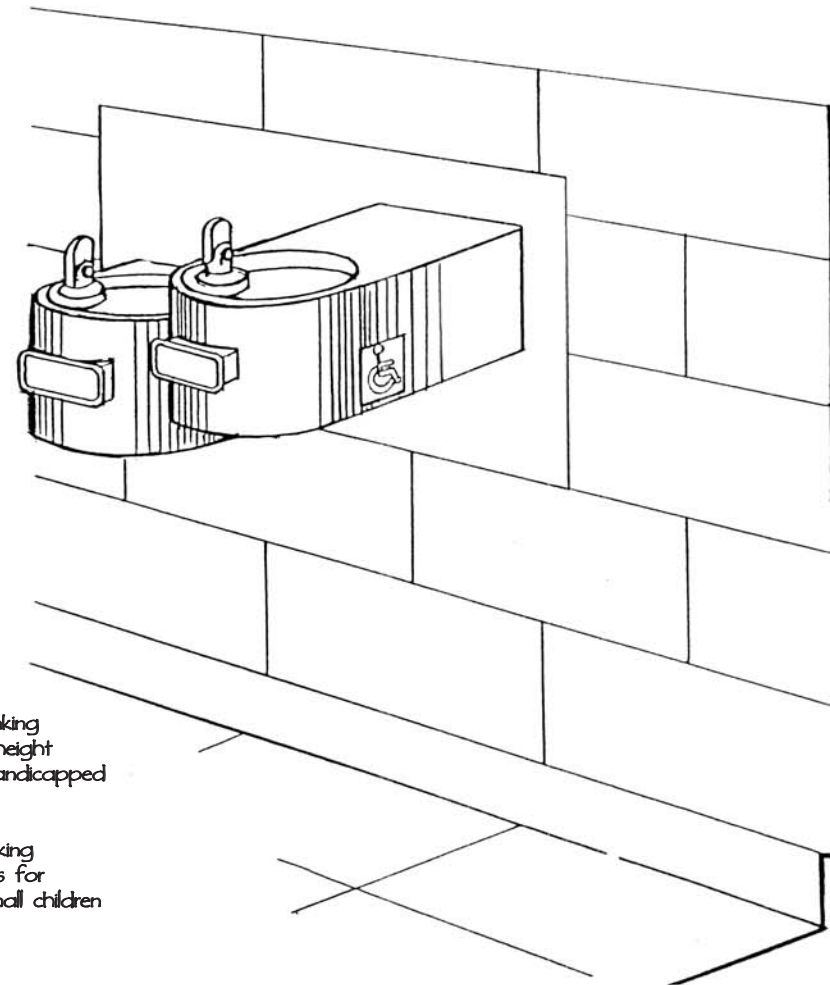


FRONT ELEVATION



SECTION



upper drinking fountain height set for handicapped

lower drinking fountain is for use by small children

AXONOMETRIC VIEW



CORRIDORS  
DUAL DRINKING FOUNTAINS  
STAINLESS STEEL TYPE

date: January 2002  
drawn by: R.C.

drawing no: STD - A26.1  
elementary